

**FIGURE 2.6:
Topography**



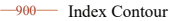
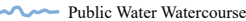




COUNTOUR INTERVAL 10 FT - ELEVATION IN FEET

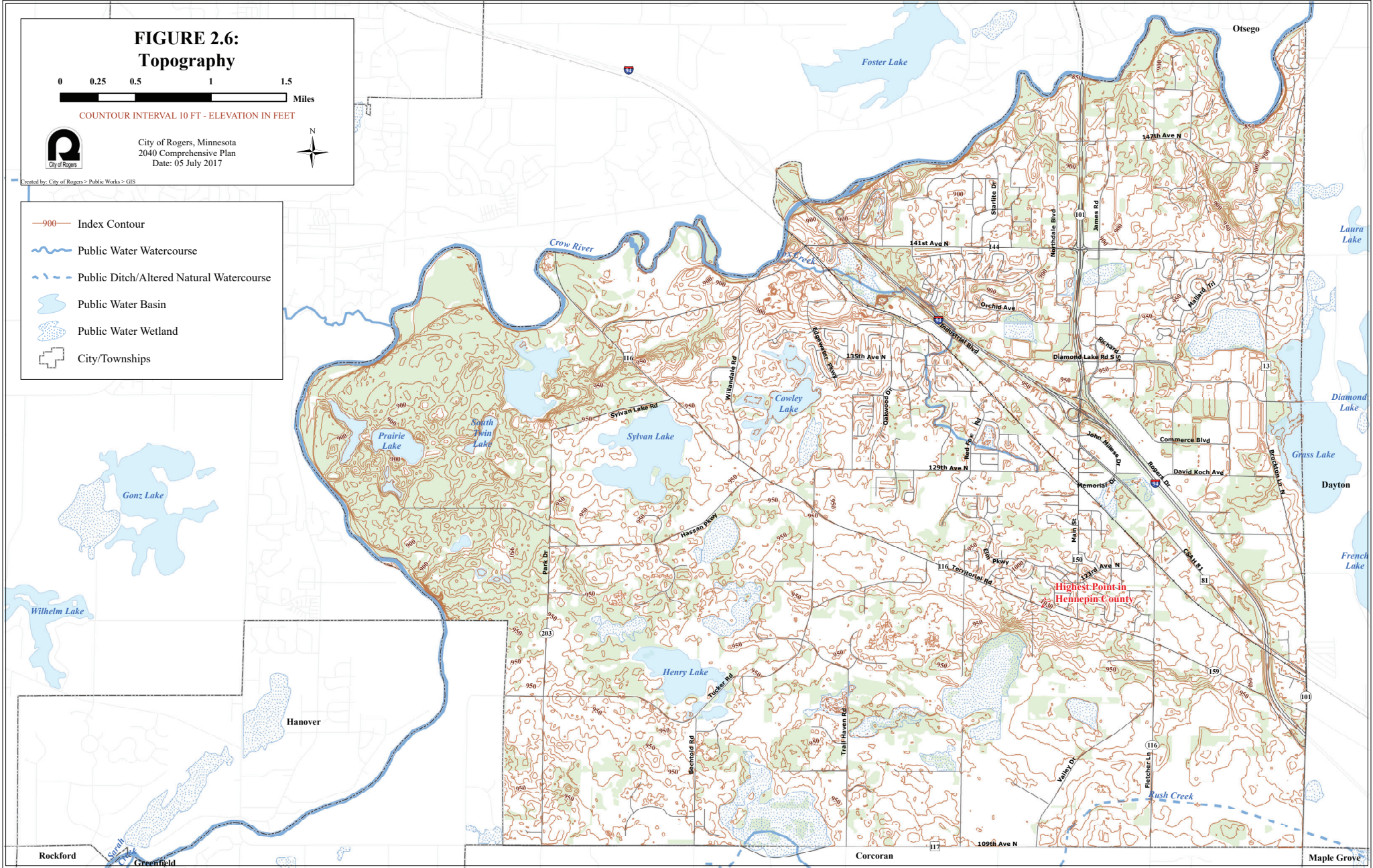


City of Rogers, Minnesota
2040 Comprehensive Plan
Date: 05 July 2017



Created by: City of Rogers > Public Works > GIS

-  Index Contour
-  Public Water Watercourse
-  Public Ditch/Altered Natural Watercourse
-  Public Water Basin
-  Public Water Wetland
-  City/Townships



Highest Point in
Hennepin County