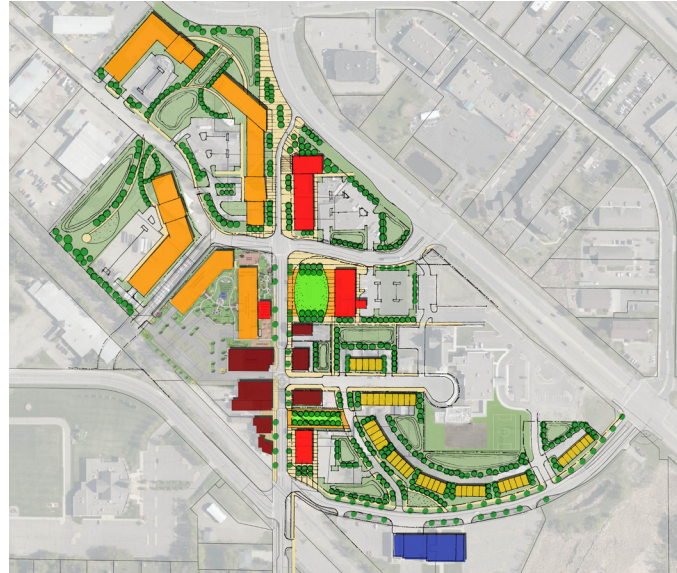


CONCEPT A



DON'T HAVE THE RESIDENTIAL AT MAIN AND JOHN DEERE ON THE SOUTH. NEED TO HAVE COMMERCIAL FOR PEOPLE TO COME

MEMORIAL DRIVE NEEDS AN OFFSET. PUBLIC PLAZA CENTERED, NEEDS MORE COMMERCIAL

CONCEPT A SWALLOWS UP MAIN STREET FOR HIGH DENSITY RESIDENTIAL BUILDINGS. WE NEED STORE FRONTS ON MAIN STREET!

ANY CHANCE WE COULD GET PUBLIC TRANSIT SERVICE ON THE RAILROAD LIKE THE NORTH STAR LINE THAT SERVES ELK RIVER?

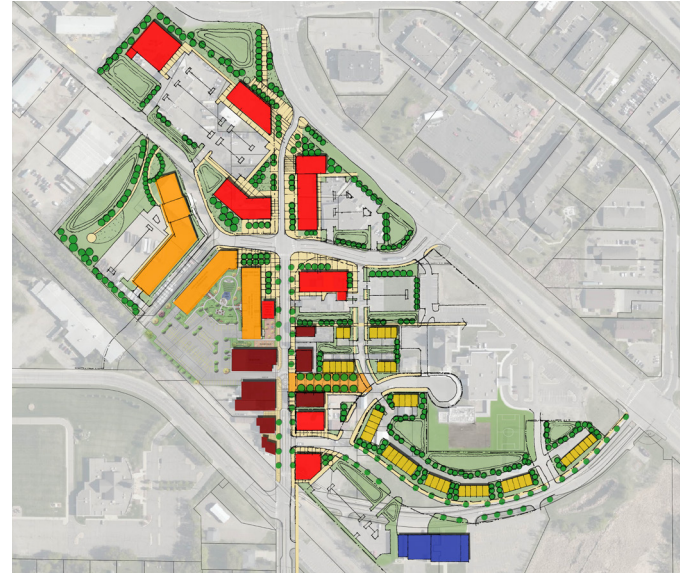
I LIKE THE CONCEPT OF RESIDENTIAL ON THE NORTH SIDE OF DOWNTOWN

TOO MUCH HOUSING FOR THE SIZE OF DOWNTOWN

NOT ENOUGH PARKING

CONCEPT A REDUCES PUBLIC PARKING TOO MUCH.

CONCEPT B



LIKE THE CHANGE TO MEMORIAL DRIVE

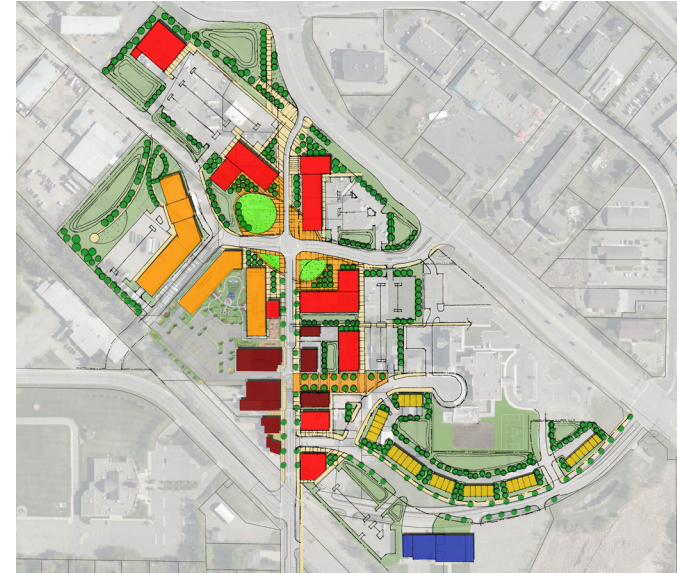
WOULD PREFER A PUBLIC PLAZA

I THINK THE CONNECTION FROM JOHN DEERE TO 129TH IS VITAL TO REDUCE DOWNTOWN CONGESTION

NOT ENOUGH PARKING

CONCEPT B REDUCES NORTH PUBLIC PARKING TOO MUCH

CONCEPT C



BALANCE COMMERCIAL & RESIDENTIAL. LOTS OF PARKING POTENTIAL, PARKING STRUCTURE

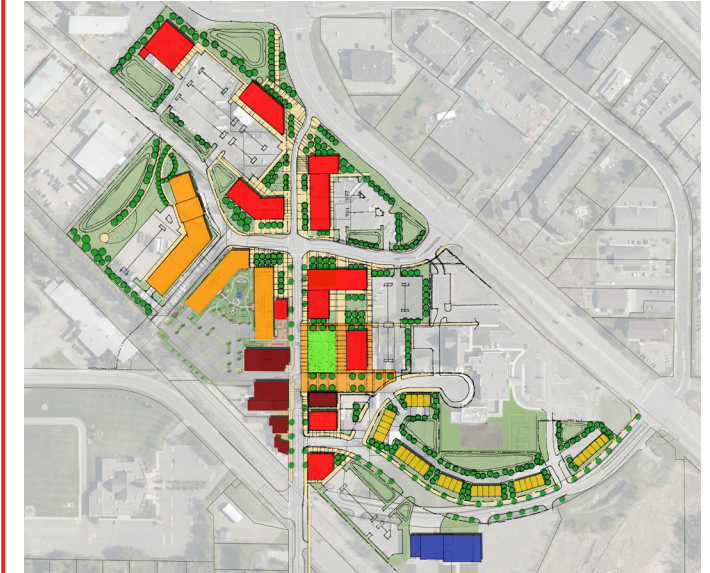
I LIKE THIS CONCEPT FOR THE CENTRAL GATHERING SPACE THAT DOES NOT ELIMINATE SHOP FRONTS, AND A PARKING STRUCTURE TUCKED AWAY.

DON'T NEED TO PRESERVE SMALLER BUILDINGS

CONCEPT C GOOD PEDESTRIAN SPACE & FLOW

CONCEPT C, UTILITY OF GREEN SPACE IS DIFFICULT WITH THOROUGHFARE

CONCEPT D



SEEMS TO ADD MORE SHOP/STORE FRONT SPACE. GOOD PEDESTRIAN FLOW

THE THEME OF HAVING THE PUBLIC PLAZA IS VERY INVITING TO COME DOWNTOWN. KEEP IT!

CENTERED PUBLIC PLAZA. BALANCE COMMERCIAL & RESIDENTIAL. LOTS OF PARKING – POTENTIAL PARKING STRUCTURE. LEANED TOWARDS D AS MY TOP CHOICE.

I LIKE THE LAYOUT OF THE PARK/WELLS FARGO AREA ON THIS ONE.

BIG FAN OF THIS ONE

OPTION/CONCEPT D PREFERRED. GOOD PEDESTRIAN FLOW

CONCEPT D BEST USE OF GREEN SPACE

GENERAL COMMENTS

LIKE THE RESIDENTIAL PLAN TO ATTRACT MORE PEOPLE TO LIVE DOWNTOWN

NONE OF THESE PLANS CONCENTRATE AS MUCH COMMERCIAL SPACE ON MAIN STREET AS I WOULD LIKE TO SEE.

NO BIKE/WALKING TRAILS THROUGH DOWNTOWN TO CONNECT TO NORTH OR SOUTH TRAILS

NEED A BALANCE OF COMMERCIAL TO DRAW CUSTOMERS DOWNTOWN. TRAFFIC FLOW IMPORTANT. CONNECTION OF JOHN DEERE TO 129TH WILL HELP IMPROVE TRAFFIC FLOW. MEMORIAL DRIVE OFFSET WITH MAIN STREET IS IMPORTANT. BIKE TRAILS TO & THROUGH DOWNTOWN.

A, B, C & D: REGARDLESS OF THE CONCEPT CHOSEN, I WANT TO SEE THE SIDEWALK ON 129TH APPROACHING MAIN STREET CONTINUED ALL THE WAY TO THE INTERSECTION. I DO NOT FEEL SAFE BIKING TO TOWN WITH MY KIDS AS-IS.

I WOULD LIKE TO SEE SOME OF THE CONCEPT ELEMENTS PRIORITIZED FOR RAPID EXECUTION: EXTENSION OF JOHN DEERE RD ACROSS THE RAILROAD, AN ALTERNATIVE TRUCK ROUTE TO BYPASS MAIN ST, THE SIDEWALK ON 129TH AND A LIGHT FOR THE 129TH/MAIN STREET INTERSECTION.

B,C,D,: MEMORIAL DRIVE REROUTE IS ELEGANT SOLUTION'